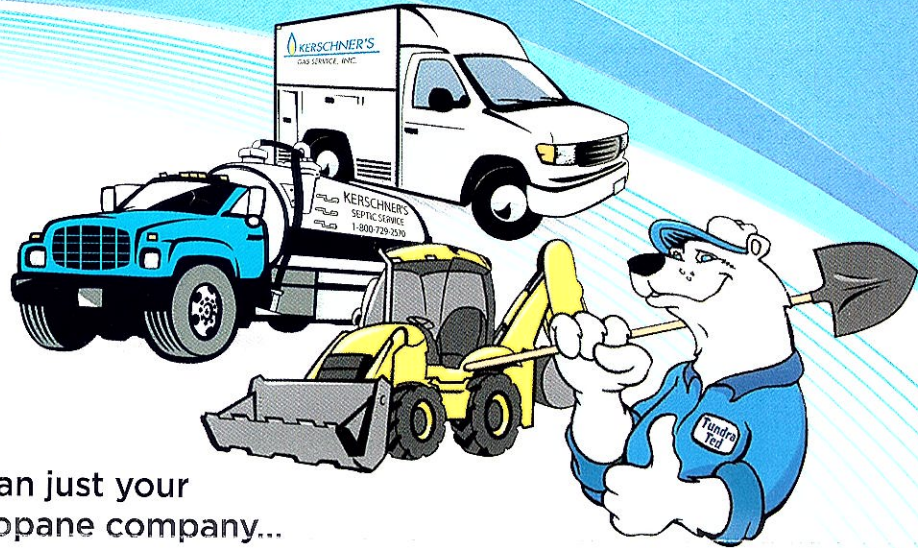




# KERSCHNER'S™

## GAS SERVICE, INC.

Seasons change and so will our home comfort needs. Kerschner's is here to help keep you comfortable. Call today for your maintenance, replacement or new install needs.



More than just your local propane company...

**SINCE 1953**

**PLUMBING • HEATING  
A/C • SEPTIC • PROPANE**

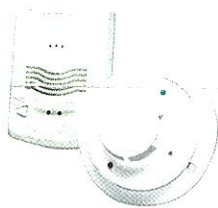


### Let us help...

with our quality installation that's right for your home or building. Call to schedule your in-home estimate.

Annual maintenance of your appliances and equipment keeps them running safe and efficiently. Vents also need to be cleared for proper venting.

Installing a carbon monoxide, gas and smoke detector(s) is recommended for your added safety.



### Value Added Services

#### HEATING & COOLING

Comfort and convenience. Kerschner's is your total heating and air conditioning professional from the design and selection to the final installation.

- Energy-Efficient Furnaces and Air Conditioners
- Automatic Humidifiers
- High-Efficiency Air Cleaners
- Boilers
- In-Floor Heating Systems
- Hydronic Heating Systems
- Mini-Splits
- Room Heaters
- Garage Heaters

#### PLUMBING

From start to finish. Kerschner's is the first choice for high quality, professional craftsmanship.

- New Construction
- Remodeling
- Repairs
- Well Inspection and Installation

#### SEPTIC INSTALLATION AND MAINTENANCE

Handling all your needs. Kerschner's promptly and professionally handles complete system installations, simple repairs and inspections.

- Inspection
- Complete System Design and Installation (New and Replacement)
- Tank Pumping

### WHAT IS THE KERSCHNER ADVANTAGE?



**10% Discount on Heating & Cooling Repairs  
Priority Service**

**10% Discount on Plumbing Repairs**

### Ask About Our Bill Paying Options \$\$

#### ■ EASY PAY PROGRAM

For those that like level monthly gas payments (includes a per gallon discount)

#### ■ AUTO PAY

So you don't have to remember to mail that payment

#### ■ AUTO DELIVERY

Scheduled deliveries based on prior usage, with no hidden fees

**1-800-729-2570**  
**715-228-2570**

[www.kerschners.com](http://www.kerschners.com)

# PROPANE

EXCEPTIONAL ENERGY®



Propane is created from natural components and has long been recognized as an environmentally friendly "GREEN" energy!

## Kerschner's Offers:

- No Hidden Delivery Fees
- Personal Service
- Free Tank Installation
- AUTOMATIC Delivery
- AUTOMATIC Withdrawal
- Easy Pay Program

### Propane Safety:

Service notification is required anytime you experience an interruption of your propane gas system. Furthermore, any scheduled or emergency interruption due to replacement, modification, repair or servicing of the propane gas system by any party other than Kerschner's Gas Service, Inc. requires such notice.

This includes replacing or installing gas appliances, changing the gas piping and/or any equipment from the appliance(s) to the propane tank (propane system) or any work that is performed which results in an interruption of the operation of the propane system in-part or its entirety.

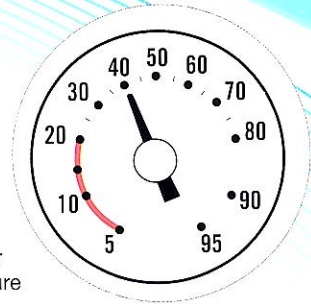
### Wisconsin State Statute 101.16(4) states:

(b) 1. A person who owns, leases, or uses a propane gas system and who is a customer of a retail supplier shall notify the retail supplier of the propane gas for the propane gas system of any interruption in the operation of the propane gas system due to the replacement, modification, repair, or servicing of the propane gas system by any other than the retail supplier. The customer shall provide the notice at least 7 days in advance of the interruption in the operation of the propane gas system, except as provided in subd. 2. The retail supplier or the person replacing, modifying, repairing, or servicing the propane gas system, shall perform a check for leaks or other defects in the propane gas system before placing the propane gas system back into operation in the manner required by rule. 2. If the interruption of the propane gas system subject to subd.1. is due to emergency repair or servicing, the customer shall provide the notice to the retail supplier as soon as possible and no later than 24 hours after the repair or servicing is completed.

## How to read your LP Tank Gauge...

A gauge will usually be located under the dome on the top of your tank. Lift the dome and find the dial with numbers from 5 to 95. Those numbers indicate the percentage of propane in your tank. For example a 500 gallon tank that reads 40% has approximately 200 gallons of propane in it. All gauge readings are approximate and are there for customer convenience.

We encourage all our customers to enroll in our "Automatic Delivery" Program, keep account balances current, watch your propane tank gauge, and call us if you have less than 20%. Failure to do so may result in an interruption of service.



## How to shut off the gas supply on tanks...

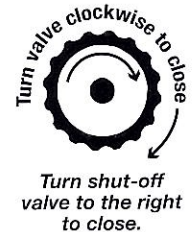
Locate shut-off valve. (Large storage tanks will have the valve under the cover.) Turn shut-off valve to the right (clockwise) to stop the flow of propane.

### Large Storage Tank

Open tank cover to reveal shut-off valve



Small Propane Tank  
Shut-off valve here



## Take the Sniff Test

Teach everyone in your home or building what propane smells like. Ask your propane retailer for a demonstration. Propane smells like rotten eggs, a skunk's spray, or a dead animal. If for any reason you are unable to smell you may want to purchase a gas detector.



If you smell gas or a leak is detected:

1. Put out all smoking materials and any other open flames.
2. Do not operate any appliances, electrical switches or thermostats.
3. Get everyone outside and away from the gas equipment
4. Shut off the gas supply, using the shut-off valve at the tank or cylinder.
5. Call 911 or Kerschner's 1-800-729-2570
6. Stay outside and leave the gas off until the leak has been found and fixed.



**Know what's below.  
Call before you dig.**

## Call Before You Dig!

It's important that anyone who is excavating must know where all buried utility lines are located. Follow these steps:

1. Call Kerschner's Gas Service, Inc. so we may locate your propane gas lines.
2. Contact Diggers Hotline to locate all other buried utility lines. IT'S THE LAW.
3. Wait the State's required time (at least 3 working days) before you begin to dig.
4. After underground lines have been located, respect the paint markings or flags and dig with care around them.

