



Complete HVAC and Plumbing Services

Here To Help

At Kerschner's Gas Service we are dedicated to creating long-term relationships with our customers by providing top quality products and services. Specializing in Plumbing, Heating and Cooling repair and installation, we have the training and expertise to provide you with professional, cost-effective services.

Preventative Maintenance

To keep your HVAC system operating efficiently replace your furnace or air handler filter regularly. Make sure return air grills are unobstructed and an adequate number of supply registers are open to allow your system to operate properly. Periodically change the battery in



digital style thermostats so you do not have an interruption of service.

Outside make sure your venting is clear of any obstructions. Air conditioning units should be kept clear of shrubs and other restrictions. Keep the cooling fins free of leaves and dried grass.

Following a few simple tips can help prevent added wear and tear to your system and add years of life to your unit. Have a Kerschner's qualified technician perform regular preventative maintenance to ensure your system is working safely and efficiently.



focus on energy[™]

The power is within you.

Keeping Everyone Safe

IF YOU SMELL PROPANE:

- 1. No flames or sparks!**
Immediately put out all smoking materials and other open flames. Do not operate lights, appliances, telephones, or cell phones. Flames or sparks from these sources can trigger an explosion or a fire.
- 2. Leave the area immediately!**
Get everyone out of the building or area where you suspect gas is leaking.
- 3. Shut off the gas.** Turn off the main gas supply valve on your propane tank if it is safe to do so. To close the valve, turn it to the right (clockwise).
- 4. Report the leak.** From a neighbor's home or other nearby building away from the gas leak, call Kerschner's right away. If you can't reach Kerschner's, call 911 or your local fire department.
- 5. Do not return to the building or area** until Kerschner's determines that it is safe to do so.
- 6. Get your system checked.**
Before you attempt to use any of your propane appliances, Kerschner's or a qualified service technician must check your entire system to ensure that it is leak-free.

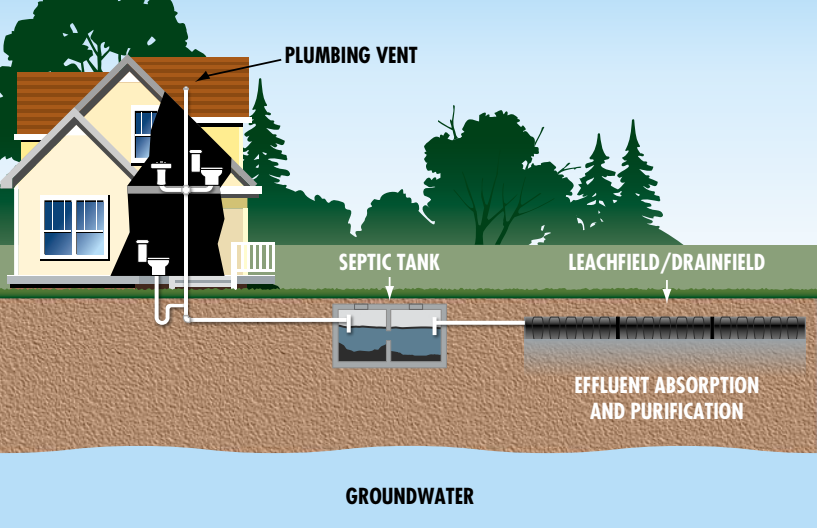


Energy Saving Tip:

Check your furnace filter every month, especially during heavy use months (winter and summer). A clean filter saves money and ensures effective air flow while maintaining the air quality and comfort of your home.

To obtain additional information on propane safety and other helpful information, visit Kerschners.com or call 715-228-2570 or 1-800-729-2570.





Tips for a Healthy Septic System

Inside Your Home

Conserve water. Large volumes of water over a short period of time will flush untreated solids out of the septic tank and into the leachfield.

Keep your drains clean. Remember a septic system uses natural biological processes, so only biodegradable waste should go into it.

Go easy with household chemicals. Disinfectants, ammonia, bathroom cleaners, bleach, etc. can kill the bacteria your system needs in order to work properly.

Outside Your Home

Keep surface water away. Divert downspouts, driveway runoff, and sump pump discharge away from the leachfield. Landscape your yard to divert rainwater away.

Locating the Septic Tank

It's very important to know where the tank is in order to have it inspected and pumped. Here are three different ways to find your septic tank:

1. Ask to see the septic system permit for your property at your local zoning department. They will have a diagram of your system on it.
2. See where your sewer line leaves your house; the tank should be about 10 feet outside the foundation.
3. Have Kerschner's probe with a steel rod, taking care to avoid damaging the tank or underground utilities.

We Can Help

- Septic Tank Pumping
- Inspection
- New or Replacement Systems

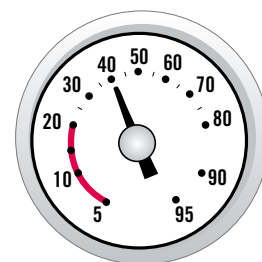
Enjoy the Kerschner Advantage

It's convenient and easy. Join the many customers already enjoying level monthly payments on their propane fuel deliveries with Kerschner's Easy Pay Program.

Take additional advantage of signing up for our automatic checking withdrawal and/or automatic computerized fuel deliveries.

Propane customers enrolled in automatic delivery who keep their accounts current are eligible to receive discounts on plumbing and heating repairs with the "Kerschner Advantage".

How To Read Your LP Tank Gauge



A gauge will usually be located under the dome on the top of your tank. Lift the dome and find the dial with numbers from 5 to 95. Those numbers indicate the percentage of propane in your tank. For example a 500 gallon tank that reads 40% has approximately 200 gallons of propane in it. All gauge readings are approximate and there for customer convenience.



**Know what's below.
Call before you dig.**

Call Before You Dig! It's important that anyone who is excavating must know where all buried utility lines are located. Follow these steps:

1. Call Kerschner's Gas Service, Inc. so we may locate your propane gas lines.
2. Contact Diggers Hotline to locate all other buried utility lines. IT'S THE LAW.
3. Wait the State's required time (at least 3 working days) before you begin to dig.
4. After underground lines have been located, respect the paint markings or flags and dig with care around them.

All information contained in this document is for informational purposes only. It is not intended to be an authority regarding safety or regulatory issues. Kerschner's Gas Service, Inc. assumes no liability in any manner, whatsoever, any person or entity choosing to rely on or use this information does so at his, her, their or its own risk.



Kerschner's Gas Service, Inc.

609 Wautoma Rd. (Hwy 21 E)
Coloma, WI 54930

715-228-2570 or 1-800-729-2570

kerschners.com

